



User Manual

5M Notebook Web Camera

www.gggcube.com

Introduction

A group of young female technicians got together and decided it was time for ladies to be able to express themselves with the hardware they used; G-Cube is specially designed by women for women. Our products are not only stylish, but are also functional and meet the needs of women.

The computer peripheral market has traditionally offered products that leave consumers with little choice in style and color.

G-Cube has revolutionized the market by offering a refreshing line of computer peripherals that are sleek, modern and colorful.

G-Cube is designed with YOU In Mind. G-Cube wants you to Express Who You Are at home, at school, at work, the local coffee shop, the PTA or at your next national sales meeting.

G-Cube wants you to Be yourself...and...Inspire Others!

IM Magician Software Installation

Step 1: Please uninstall previously installed webcam driver before installing IM Magician software.

Step 2: Insert the enclosed driver (CD) to start installation. Then you'll see "Figure B" pop up.



Figure B

Step 3: Click "IM Magician Software" to start the installation, then follow the on-screen instructions to accomplish the installation.

Step 4: When the installation is completed, the icon "IM Magician" will appear on the desktop, then you

have successfully installed the driver. Double click the icon "IM Magician" or go to START >> PROGRAMS >> G-CUBE IM Magician >> IM Magician to launch the software. Then you will see the main menu appear as Figure C.

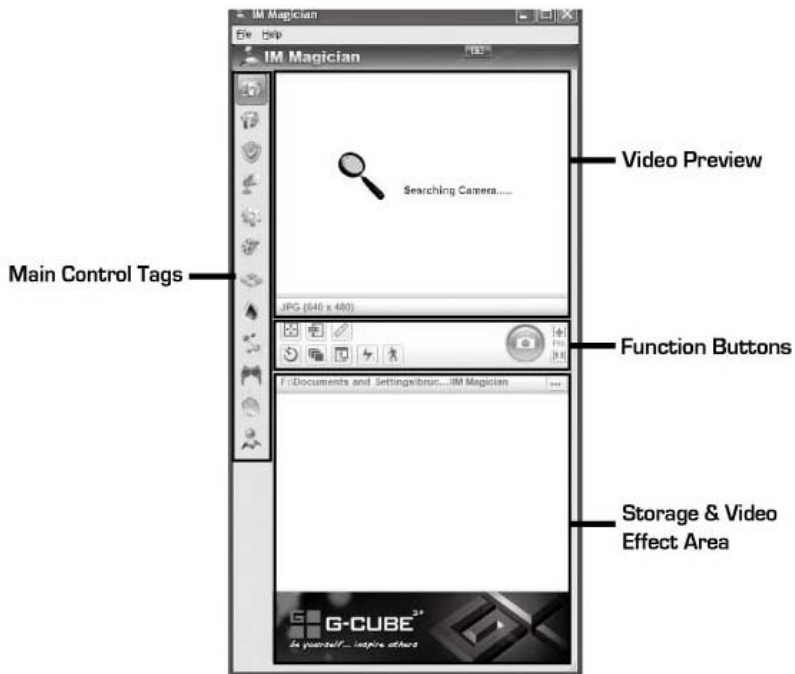
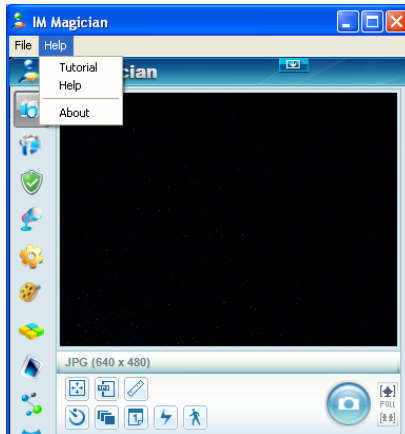
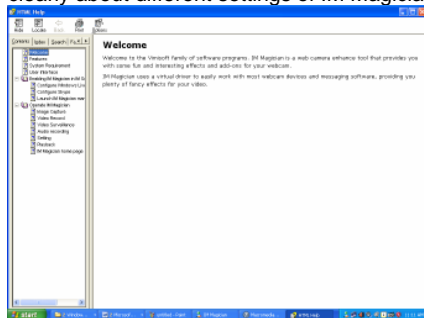


Figure C

Step 5: Access the help system to learn more about the software. Click **Help>>Tutorial** to see the flash of configuration in MSN.

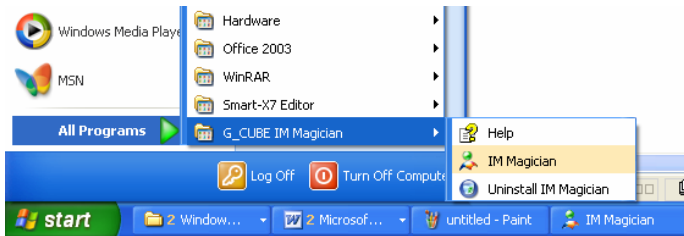


Click **Help>>Help** to know clearly about different settings of IM Magician.



Step 6: To remove the software:

Go to **START**, then select **PROGRAMS >> G-CUBE IM Magician>> Uninstall IM Magician**.



Go to **START**, then select **Control Panel >>Add or Remove Programs**, look for “**IM Magician**”, click on “**Remove**”.

CAP Software Installation



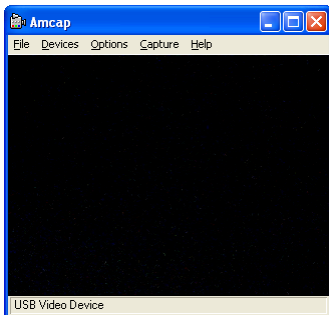
Step 1: Insert the enclosed CD, and then you'll see “Figure B” pop up. >>Click “CAP” option in the “Figure. B”. Then you'll see the icon  will appear on the desktop.



Figure B

Step 2: Double click the icon  from the desktop to preview the image in the “Amcap Screen” as shown below.

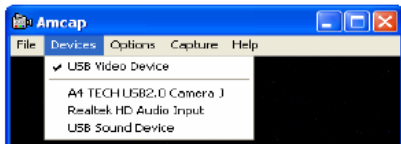


Amcap Screen

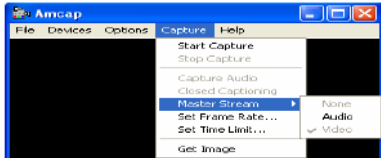
If Amcap image fails to appear, please select the item “preview” under the “Options” tag.

Step 3: Record videos with sound according to below steps:

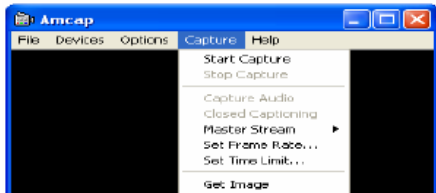
A. Click “Devices” option >>Select “USB Sound Device”. (If you want to record video without sound, deselect here.)



B. Click “Capture” option >> Select “Master stream” >>Select “Audio”.



C. Click “Capture” option >> Select “Start Capture”, then it will record and save videos.



D. Click "Capture" option >>Select "Stop Capture" to finish recording. Then you can save videos on your PC, email it, upload it online, burn to DVD!

Troubleshooting

Webcam doesn't work

1. Make sure the settings of the webcam is correct on your computer
2. Check USB port of your computer

Cannot hear anything in your microphone

1. Make sure the webcam's microphone is listed as the "Default device" under "Sound recording"
2. Make sure the webcam's microphone is optimally positioned to pick-up your voice
3. Make sure the microphone volume level is turned up

Your Product Support

For technical support, Please visit our website at Support.gggcube.com or E-mail to support@gggcube.com

For warranty information, please visit our website at warranty.gggcube.com

For product registration, please visit our website at register.gggcube.com

By registering your product, you will get a 20% off coupon in your E-mail from us on your next purchase at www.gggcube.com

**All pictures & description mentioned above is for reference only and is subject to change without notice.